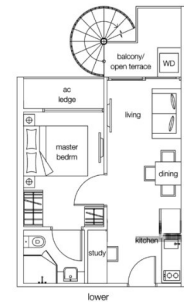


# FOR SALE

RESIDENTIAL - CONDOMINIUM  
667SQFT (62SQM) / S\$ 835,000

+65 9328 7000



## RESIDENTIAL - CONDOMINIUM

NOTTINGHILL SUITES, 29A, TOH TUCK ROAD,  
CLEMENTI PARK, UPPER BUKIT TIMAH, SINGAPORE

- LISTING ID: SGLA92186050
- TENURE: FREEHOLD
- TITLE: N/A
- SIZE BUILT-UP: 667SQFT (62SQM)
- SIZE LAND: N/A
- NO. OF FLOORS: 5
- FLOOR/LEVEL: N/A - N/A
- BED ROOMS: 1
- BATH ROOMS: 1
- MAIDS ROOMS: N/A
- PARKING SPACES: N/A
- LAYOUT TYPE: N/A
- FACING: N/A
- VIEWING: CITY VIEW
- SELLING PRICE: S\$ 835,000  
1,251PSF (13,475PSM)
- COMPLETION YEAR: 2016
- CONDITION: PARTIALLY RENOVATED
- FURNISHING: PARTIALLY FURNISHED
- LISTING DATE: JUN 03, 2021

## NOTTINGHILL SUITES

Partially furnished, 1 bedroom, 1 bathroom Condominium for Sale. Completion in 2016, this unit is partially renovated. Others: freehold, city view Located in Singapore's district D21 near Clementi Park, Upper Bukit Timah in the area Central West (Central region).

## EXTERIOR FACILITIES

- 24 Hours Security
- Gym / Fitness (Room / Court)
- Swimming Pool

VISIT THIS PROPERTY AT: <https://www.evangelinegohutttons.com/property/SGLA92186050>



## EVANGELINE GOH - HUTTONS ASIA PTE LTD

3 Bishan Place #05-01 CPF Bishan Building  
D20, 579838, Singapore

+65 9328 7000  
WhatsApp Me

evangelinegohutttons@gmail.com

L3008899K  
R007000B

<https://www.evangelinegohutttons.com>



Scan QR Code

**Huttons**® Call for Viewing  
The Agency of Choice +65-93287000